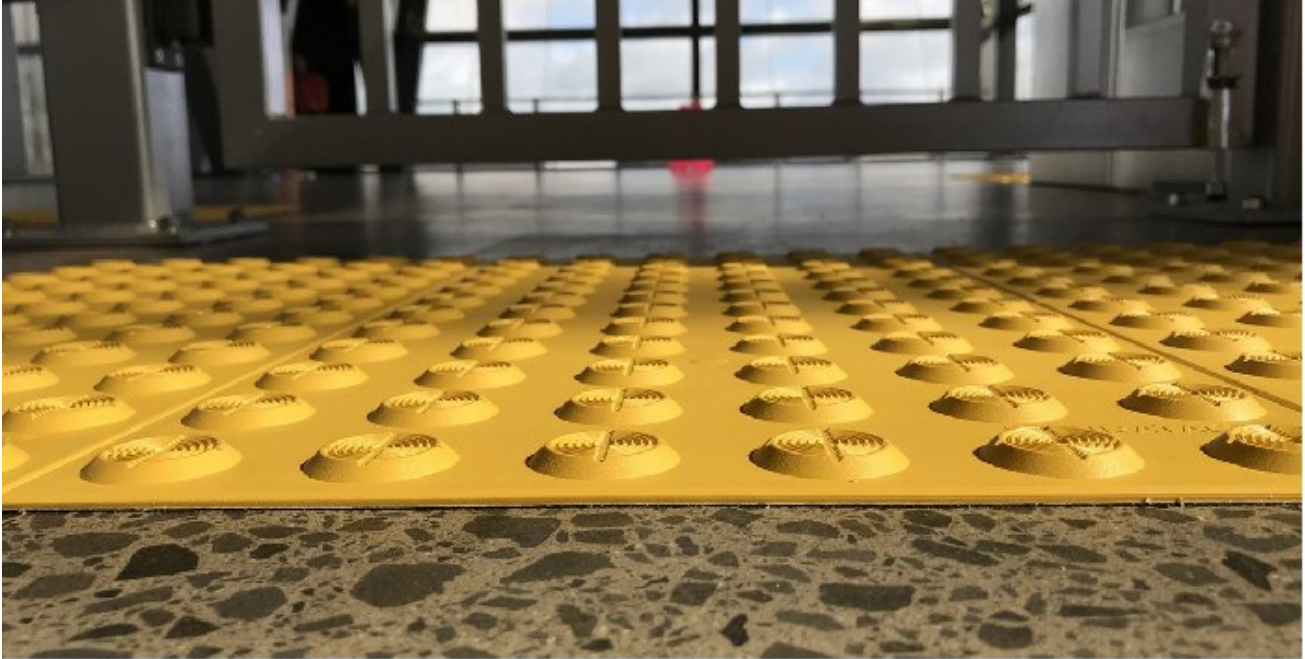




MRC Peel & Stick Polymer Tac-Tiles

- MRC Peel & Stick Polymer Tac-Tiles are a specialised Tactile Ground Surface Indicator product for the orientation of people with vision impairment and provides an anti-slip surface for all pedestrians.



- They have been developed as a retrofit system for new and existing surfaces and are manufactured from high quality, UV stable polymer with a strong butyl and PE mesh self-adhesive backing.
- Each raised dome has a unique grooved cross on the top that allows water to drain freely, enabling greater slip resistance in the wet.

FEATURES

Type: Warning and Directional

Dimensions: 300 X 300mm X 7mm (2mm base).

UV Stable Colours: Safety Yellow, Black (Others available on request).

Location: Interior & Exterior.

Application: Self-adhesive Butyl Tape.

Substrates: Concrete, asphalt, ceramics, stones, woods, steel.

Installation: Peel & stick direct to existing substrate. Make sure substrate is sound, clean and dry. Best bond achieved by heating substrate & tamping with weighted cart. Not suitable for heavily textured or crumbling surfaces without a stabilising screed.

Compliance: AS/NZS 1428.4.1:2009, AS/NZS 4586:2004.

