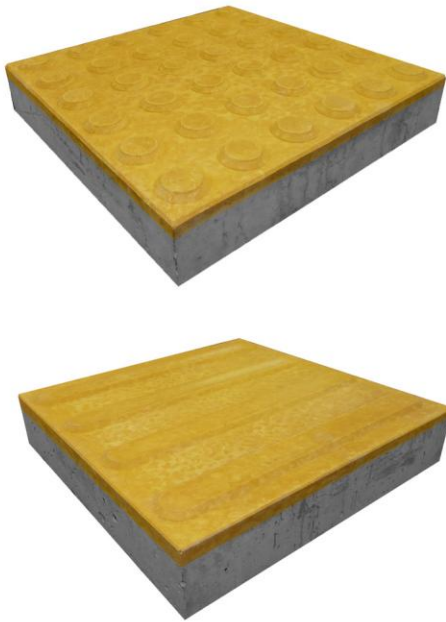




MARKET LEADERS IN TACTILE GROUND SURFACE INDICATORS

PRECAST CONCRETE TACTILE PAVERS



POLYURETHANE TACTILE STUD SYSTEM



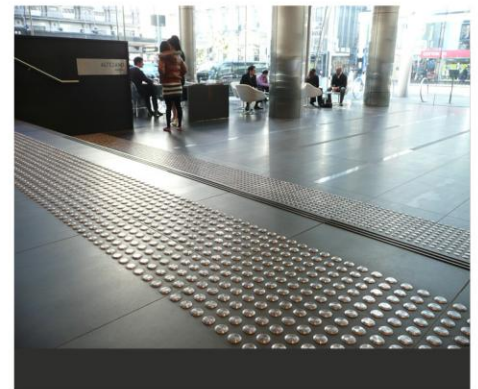
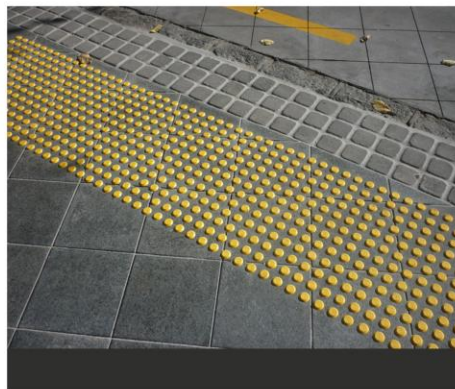
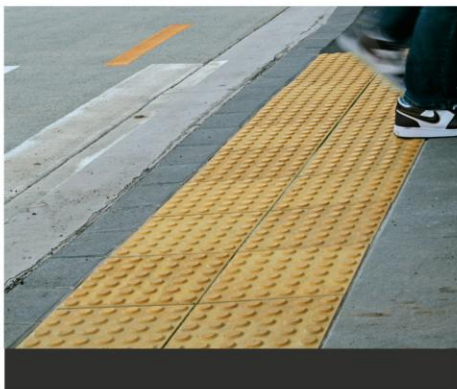
STAINLESS STEEL TACTILE STUD SYSTEM



- Specifically developed and locally manufactured for the harsh New Zealand climate.
- Superior compressive strength, slip resistance, colour stability and size uniformity.
- Manufactured in two layers incorporating a dense and durable 50 MPA face mix.

- Developed as a retrofit system for new and existing surfaces.
- Designed and manufactured in New Zealand using high quality, specially formulated based thermoplastic polyurethane (TPU).
- They exhibit excellent resistance to abrasion, microbial and UV attack.

- Developed as a premium retrofit system for new and existing surfaces.
- The tactile stud and stem are precision CNC machined from Marine Grade 316 Stainless Steel.
- You will not find a better quality product on the market.



For more information on the full range of Mobility Research Centre products, feel free to contact one of our friendly team on 09 5204953 or visit our website www.mobilityresearch.co.nz

MOBILITY RESEARCH CENTRE

P +64 9 520 4953 F +64 9 520 5471 E info@mobilityresearch.co.nz www.mobilityresearch.co.nz
Mobility Research Centre Ltd, 10 Eden St, Newmarket, Auckland 1023, PO Box 9518, Newmarket, Auckland 1149

